



MEMBER JURISDICTIONS:

Grandview
Granger
Harrah
Mabton
Moxee
Naches
Selah
Sunnyside
Tieton
Toppenish
Union Gap
Wapato
Yakima
Yakima County
Zillah

YVCOG EXECUTIVE
COMMITTEE:

James A. Restucci, Chair
Mayor, Sunnyside
Kevin Bouchey
Yakima County Commissioner
Rick Ensey
Yakima City Council
Area 1 — Dan Olson
Union Gap City Council
Area 2 — Loren Belton, Vice Chair
Toppenish City Council
Area 3 — Angel Reyna
Mayor, Mabton
Member At Large-
John Hodkinson, Jr.



311 North 4th Street, Suite 202
Yakima, WA 98901
509-574-1550
FAX 509-574-1551
Website: www.yvcog.org



New CDBG & PWTf Threshold Requirement: Greenhouse Gas (GHG) Policies

By Page Scott, Executive Director

Many state competitive grant applications have a new threshold requirement stemming from RCW 70.230.070, passed by the 2009 Legislature: *Adoption of a policy to reduce greenhouse gas emissions.*

Many jurisdictions already have such policies in place. There is no need to adopt additional policies if what is currently in place provides guidance on the reduction of greenhouse gases.

The Public Works Board developed, in conjunction with stakeholder groups, a form that enables applicants to create their own policies. These policies can be used for the CDBG and PWTf applications and most likely others, too.

The example policies document is accessible on the Public Works Board website at: pwb.wa.gov. It's called the: ***Draft policies for GHG by category.doc***.

For additional information, see "Legislation Ties..." on Page 5.

CONNECTING WASHINGTON TASK FORCE



The Governor's New Washington Task Force

By Page Scott, Executive Director

Back in May when signing the State Transportation budget, Governor Gregoire announced she was forming a transportation advisory group. The thirty-one members of the Connecting Washington Task Force were announced on July 5th. On July 19th, the first meeting was held and chaired by Gov. Gregoire.

This Task Force is charged with developing a financially sustainable 10-year funding strategy for the state's transportation system and presenting it to the 2012 Legislature. The task force will:

1. Develop principles for investments, categories of investment, and priorities for those categories. The task force will provide examples of key investments for each category that are consistent with the developed principles, but will not develop a specific project list.
2. Develop principles for revenues to fund investments and identify fund sources consistent with those principles.
3. Present the facts about the transportation funding crisis — and the risks of inaction — to stakeholders, public officials and the citizens of Washington. The task force members' professional networks, the media, public meetings and the continued work of this task force are essential channels for delivering this information.

More information about the Task Force and meeting materials can be found at:

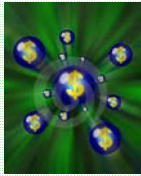
www.governor.wa.gov/priorities/transportation/connectwa.asp



Grant & Funding Notes

By Shawn Conrad, Senior Planner

- The Department of Ecology will hold a **webinar on sources of funding for natural resources, environment, and recreation** on September 8, 2011 from 1:30-3:30 p.m. The webinar will provide information about such financial assistance programs as the Washington State Clean Diesel Program, Clean Water Act Section 319 Nonpoint Source Grant, Centennial Clean Water Program, Waste Management and Toxics Control Coordinated Prevention Grants, and the Washington State Water Pollution Control Revolving Fund, among others. For more information and to register, visit <http://www.rco.wa.gov/webinar.shtml>.



- Are you interested in submitting a **Combined Funding Application to the Department of Ecology for their water quality grants and loans? Ecology will hold Funding Application Workshops** for State Fiscal Year 2013:

- On September 14, 2011 in Spokane
- On September 15, 2011 in Ellensburg.

Water quality programs covered by the Combined Funding Application include the Washington State Water Pollution Control Revolving Fund, Centennial Clean Water Program, and the Federal Clean Water Act Section 319 Nonpoint Source Fund. For more information, visit <http://tinyurl.com/3fvlzgr>.



- The **Infrastructure Assistance Coordinating Council's (IACC) 2011 annual conference** is coming up on October 19-21, 2011 in Wenatchee. IACC helps Washington communities find and secure resources needed for infrastructure construction and improvements. The organization is composed of staff from state and federal agencies, local government associations, nonprofit technical assistance organizations, and tribes. At their annual conference, IACC provides training and critical information regarding state and federal infrastructure financing programs. Types of infrastructure discussed include domestic water, sanitary sewer, storm sewer, solid waste, roads, bridges, rail, parks, energy, and telecommunications. In addition, jurisdictions can pre-register to meet with an IACC Technical Team, composed of staff from a variety of federal and state programs. The Technical Team will explore specifically identified infrastructure problems and strategies with the jurisdiction.

Registration and other information for this year's conference, Tides of Change, are available at <http://www.infracfunding.wa.gov/conference.html#1>. Registration is \$175 and includes breakfasts and lunches. Hope to see you there!



Census Data Released

By Shawn Conrad, Senior Planner

The Census 2010 Summary File 1 for Washington State has been released. Summary File 1 includes information on age, sex, households, families, relationship to householder, housing units, detailed race and Hispanic or Latino origin groups, and group quarters. These data are available down to the jurisdiction and block levels, and can be accessed at the Washington State Office of Financial Management's website at <http://www.ofm.wa.gov/pop/census2010/default.asp>. Also, customized searches of all Census 2010 data can be completed using the Census Bureau's American Fact Finder at <http://factfinder2.census.gov/faces/nav/jsf/pages/index.xhtml>.

Photo above: Secretary of Commerce Gary Locke, Acting Deputy Secretary Rebecca Blank and Census Bureau Director Robert Groves releasing the first set of 2010 Census data on December 21, 2010.



Commerce Updates UGA Guidebooks

By Shawn Conrad, Senior Planner

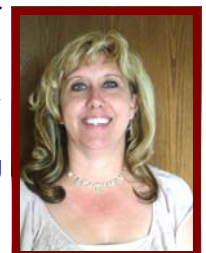
The Department of Commerce is updating its Urban Growth Area (UGA) guidebooks. The books were last updated in 1992 and legislation, regulations, and local plans have changed significantly since that time. Commerce is conducting outreach and scoping in an effort to ensure that the guidebook includes the topics most relevant to users. Currently, Commerce is requesting input via an online survey available at <http://www.commerce.wa.gov/site/1377/default.aspx>, which asks participants about the topics most important to them. During the next year, further information and materials, including draft chapters of the guidebook, will be available on the website.



August Additions: Welcome, Chris!

By Sarah Hyndman, Office Specialist

Last month, YVCOG hired Chris Wickenhagen as the new Administrative Finance Officer. Chris was most recently the Head Secretary for Selah High School. She and her husband, Kevin, raised their daughters, Savannah and Monique, in the greater Yakima Valley. Her schedule is 8 a.m. to 5 p.m. from Monday to Friday. She's been a lovely addition to our staff. You'll see her at the next General Membership Meeting in Tieton. Please join us in welcoming Chris onboard!





Top 10 Reasons Not To Commute By Bike...

By Brian Curtin, CTR Program Coordinator

- 10 Your health insurance is a company benefit and your increased health would equate to a loss by using your benefits less.
- 9 It's hard to smoke, put on make-up, shave, or talk on the cell phone when you are cycling.
- 8 You won't spend as much quality time sitting in your truly enjoyable car.
- 7 Your insurance agent is a great guy and you would hate to stop paying car insurance premiums.
- 6 If too many people do it, gas stations and car lots will go out of business, adding to the unemployed.
- 5 The many options of what you can do with the money saved on gas, insurance, and maintenance, may cause minor dilemmas.
- 4 The natural high and energy rush you'll feel daily will increase your performance at work; possibly leading to a promotion and better pay; further compounding reason number 5.
- 3 You'll lose weight and new clothes are just too expensive!
- 2 Your fitness level may cause you to outlive your friends and be lonely in your old age.
- 1 Its just too much trouble eating all the extra food you will need for energy.

And now, five exceptional reasons why you SHOULD bike commute:

1. For Your Body

Riding a bike offers many health benefits. Here are just a few:

- increased cardiovascular fitness
- increased strength
- increased balance and flexibility
- increased endurance and stamina
- increased calories burned



It can be done by people of all ages, from childhood up even through the adult years when achy joints don't allow for more stressful exercise like jogging.

2. For Your State of Mind

Riding a bike has been proven to relieve stress. Regardless of if you are riding purely for pleasure or for a specific purpose, you will arrive at your destination feeling relaxed, energized and happier about the world and yourself. Plus, being out on your bike is just flat-out fun.

3. For Your Community

Being out on your bike is good for the people around you as well. You are able to go the places you want to go and yet reduce road traffic.

You can ditch the noise that a car generates and are still

Continued From Left...



interact with people as you move. From a bike, you can wave to a neighbor, say hi to a kid, smell someone's dinner cooking and be a warm and friendly human presence on the streets.

Also, not insignificant: operating a bicycling does not harm the environment. There is no polluting exhaust released; no oil or gas consumed. And the energy and materials used to manufacture one automobile could be used to create a hundred bikes.

4. For Convenience

There is an undeniable convenience factor you'll discover when riding a bike. Front row parking spaces are guaranteed no matter where you go. Traffic jams are also irrelevant.

Though cars will certainly make better time on long trips, you'll find for many short trips or through heavy traffic, you can travel just as fast or faster on your bike.

Have you ever been to a massive festival or concert in a park somewhere, these events draw so many people that just getting there is a problem! Going in on a bike is a perfect solution. Zip in, zip out. You don't have to get there hours early to get a parking spot or face parking miles away from the event. And you won't have to wait hours in traffic to get out once it's over.

5. For Your Pocketbook



It costs between 20 and 30 cents per mile to operate a car, depending on the vehicle. This is based on expenses like gas, oil, maintenance, etc., that go up when you drive more. This figure doesn't include the hidden costs of vehicle ownership like depreciation, taxes, and insurance. These factors make the actual per mile cost to operate a car much higher. When you start multiplying operation cost per mile by the distance you ride, you can easily calculate how much money you save by riding a bike.

For example: my daily roundtrip commute is 16 miles. If I do that just twice a week, I will save over \$400 in operating costs alone in the course of a year. (16 miles x 2 trips per week x 52 weeks x .25 cents per mile.) If you would otherwise have to pay for parking, tolls, and the like, don't forget to factor that in too. It can add up quickly.

Ride For You

When you ride your bike, you are doing a lot of good things, many of which are for the benefit of others. Ultimately, the one who benefits the most is you through: better health, peace of mind, increased confidence and self-reliance, and even through a fatter bank account.

For all these reasons, get out there on your bike today. Even if you don't save the world in the process, you'll still have fun trying.



Continued Above Right...

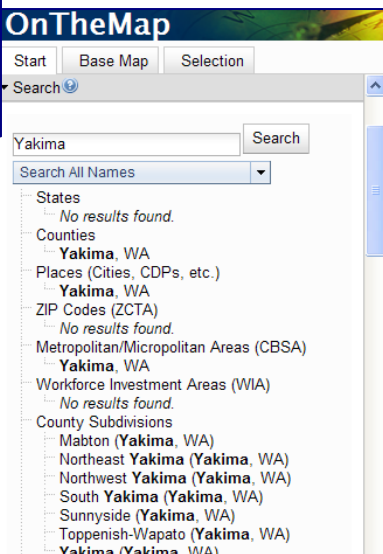
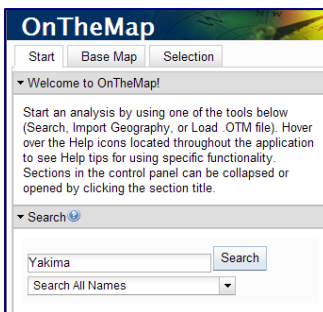
New Online Mapping Applications Provide a Wealth of Information

By John Rohrbaugh, GISP

Recently I had the privilege to sit in on a webinar put on by the US Census Bureau. As you may know, they are holding a tremendous amount of data collected during the last census and have been coming up with new and ingenious ways to disseminate this information and wealth of data. A new online mapping application was just released which allows users to create maps, charts, statistics, and export data packages for the 'Longitudinal Employer-Household Dynamics' program of the US Census Bureau. This new mapping system is known as 'OnTheMap'.

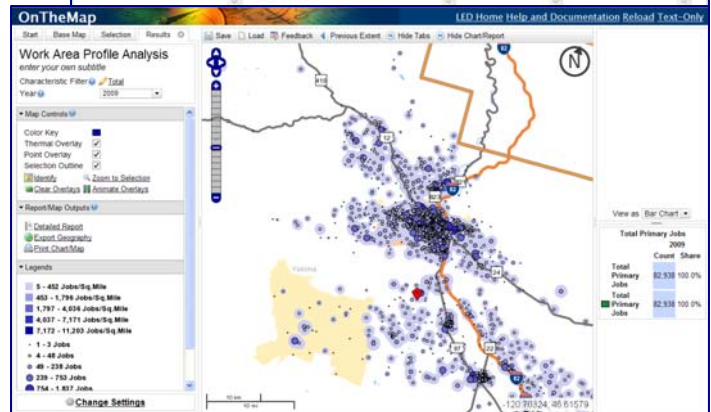
OnTheMap is a web mapping application similar to Google Maps and other mapping applications with your basic pan, zoom, and select functionality. In addition, you can load your own data into the application for more advanced functions. The application is accessible at this address: <http://lehdmap.did.census.gov/> and starts the user out at the standard view of the United States. From this entry screen a user can easily be taken to a place of interest using a basic names query in the search box.

Searching on a place name such as "Yakima" returns MANY different choices as they relate to the Yakima County region as shown below.



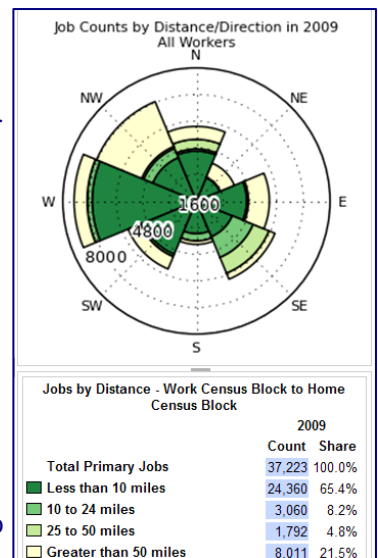
When 'Yakima, WA' is selected under "Counties" you can then proceed to tell the system to "perform analysis on the selection area". Once you have chosen your analysis area, another dialog appears where one can select from a varied array of data and statistics. Once you have selected the analysis settings, the map refreshes showing a stunning array of information based upon your criteria.

Continued Above Right



The map application returns critical data about area employment in an easy to read and understand format. (See example above). From here, it's as easy as playing around with the reports and charts to acquire useful information for studies, briefings, reports, and other purposes. I strongly encourage experimenting with all the output possibilities.

As a final example, I generated an interesting graph based upon the distance and direction that Yakima residents travel for work. On the Analysis Settings dialog, under "Analysis Type," I selected "Distance/Direction". The system generated maps and chart showing 21% of Yakima residents travel more than 50 miles to work!



The 'OnTheMap' application created by the US Census Bureau appears to be a useful tool with a wide range of statistics available. In addition to what you have seen, the information can be exported to graphs, charts, spreadsheets, or spatial data. These can all be utilized to assist primary decision makers in a community to better understand the employment facts for their jurisdiction.

TITLE VI Notice to the Public: YVCOG fully complies with Title VI of the Civil Rights Act of 1964 and related statutes and regulations in all programs and activities. For more information, or to obtain a Title VI Complaint Form, see <http://www.yvcog.org/title6.pdf> or call (509) 574-1550.

CONGRATS

on The iBus Application!

By John Rohrbaugh, GISP

Another recent mapping application has just hit the streets and has won serious acclaim. If you haven't already visited this site, the City of Yakima and Yakima Transit have released an application called iBUS at:

<http://www.ci.yakima.wa.us/gis/iBus/index.html>



This incredible application was developed to allow the Yakima Transit rider to map out or plan a ride on the Yakima bus system. The application provides alerts about route issues or delays and other significant events that might alter or delay a route. In addition, the system can also tell you where your bus is, and how fast it's going! The iBus application recently was awarded a Second Place "Best Web Map App" prize at the International User Conference of ESRI's ArcGIS software in San Diego, California.



Congratulations to the staff at the City of Yakima GIS!



From iBus to OnTheMap, many new and extremely useful application utilizing maps and data are springing up online. Although we cannot profile them all, we will continue to try and illustrate those that we feel can benefit the membership of the Yakima Valley Conference of Governments. Keep reading in the coming months for more!



Your YVCOG Staff:

- J. Page Scott, Executive Director
- Brian Curtin, CTR Coordinator
- Deb LaCombe, Senior Transportation Planner
- Shawn Conrad, Senior Planner
- John R. Rohrbaugh, GIS Analyst/Systems Administrator
- Chris Wickenhagen, Administrative Finance Officer
- Tamara Hayward, Office Specialist
- Sarah A. Hyndman, Office Specialist
- Serena Pettit, Office Technician (CTR Intern)



Legislation Ties Greenhouse Gas Policy to Funding

By Shawn Conrad, Senior Planner

RCW 70.235.070, passed in July 2009, requires state agencies to consider whether an entity receiving funds for infrastructure and capital development projects has adopted policies to reduce greenhouse gas emissions. Agencies also must consider whether projects are consistent with:

- The state's limits on the emissions of greenhouse gases established in RCW 70.235.020;
- Statewide goals to reduce annual per capita vehicle miles traveled by 2050;
- Applicable federal emissions reduction requirements.

The Public Works Board will require that policies are in place at the time of submission of all future applications for Public Works Trust Fund awards. Working with stakeholder groups, the Public Works Board developed a template called the GHG Policy Tool that can be used by jurisdictions to adopt their own policies.

The Community Development Block Grant Program (CDBG) also will require that applicants adopt a policy to reduce greenhouse emissions to qualify for CDBG funding. The CDBG program allows use of the Public Works Board GHG Policy Tool to help jurisdictions adopt their policies.

If you would like a copy of the GHG Policy Tool, please contact Shawn Conrad at conrads@yvcog.org or 574-1550 and I will forward it to you.



September Committee Meetings

MPO/RTPO Technical Advisory Committee

Thursday, Sept. 8 at 10:00 a.m.

YVCOG MPO/RTPO

Executive Committee & Policy Board & YVCOG Executive Committee

Monday, Sept. 19 at 1:30 p.m.

The 300 Bldg* 2nd Flr * 311 North 4th St * Yakima
For more info, call (509) 574-1550.

Lose the Keys, Score Big! Aug. 15th - Sept. 18th



LOCAL PRIZES!!!

Massage from Massage Associates of Yakima-\$65

Sea Galley gift card - \$60

Black Angus gift card - \$50

Bi-Mart gift card - \$45

Fred Meyer gift card - \$40

Pedometer - (3) \$30

Sling Bag – (2) \$30

Movie Bucks - (5) \$10

Brita Water Filtration Bottle – (4) \$10

The longer days and hot temps mean summer is here!!! It's time to get tuned up, ditch the car and save gas by choosing a different type of commute during **August 15th thru September 18th**. You're eligible to win great local prizes by hopping on your bike, taking the bus or walking to work at least four trips without using your car. Pick one or try them all out during the contest!

For more information contact your Employee Transportation Coordinator or Brian Curtin, YVCOG CTR Program Coordinator:

Phone 574-1550 or Email at: curtinb@yvcog.org



Give Gas Prices a
Knockout PUNCH!

Track your savings & win prizes when you sign
up at RideshareOnline.com!

*Sharing the ride is good for your wallet, your car,
and the environment.*

Carpool or vanpool at least 2 days/week between August 15 and September 18
and you could win a luxury getaway or an Apple iPad2!* Also: weekly drawings
for \$50 gift cards.

Visit RideshareOnline.com for prize details.